

**Centrifugal Casting High
Chrome Roll**

**Centrifugal Casting High
Chrome Roll**



Thanks to its high content of M7C3, type carbide in range of 20-30% and discontinuous network distribution of carbide, the roll offers a high wear resistance performance. The matrix is finely-disseminated secondary carbides (M7C3□M23C5 and M3C types), increasing therefore the wear resistance of roll, The Cr2O3 enriched oxide film on the roll surfaces is highly resistant to oxidization and plastic strain, making the roll extremely suitable for steel hot milling process.

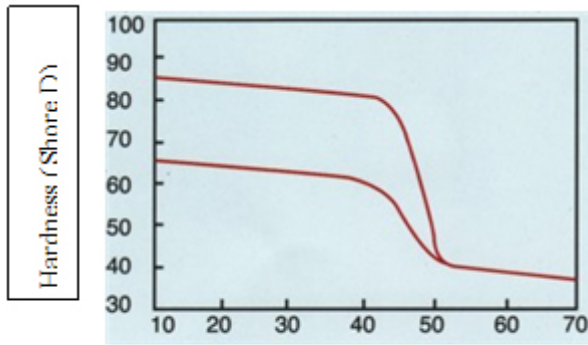


Figure1. Hardness in Depth Profile

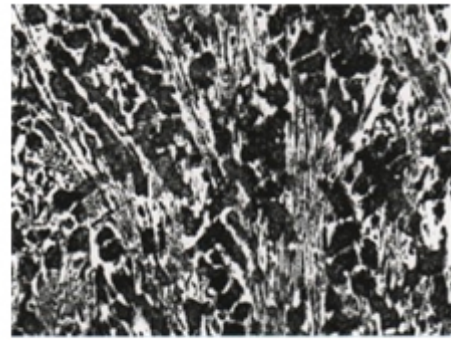


Figure 2. Microstructure Mag. x2000

Mechanical properties

Hardness of shell	HSD65 - 85
Hardness of core	HSD35 - 48
Tensile Strength of core	≥450MPa

Chemical Properties

C	Si	Mn	Cr	Ni	Mo
2.4/3.0	0.4/0.6	0.8/1.2	16.0/20.0	0.8/1.5	0.8/2.0

Application

Mainly used for the front 3 and 4 finishing racks of continuous strip mill and the post rack rough mill.